

U-587- Tho^s Ashby to Chas^s Cashmore -

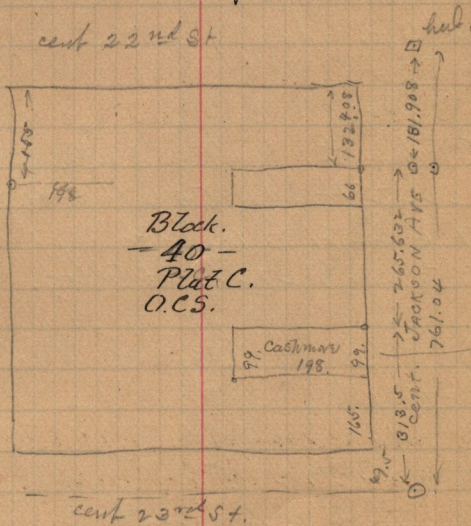
Nov 19-1884

✓ Pt B-40- Plat "C"- Ogden City Survey
 Beg. 10. rods North of S. E. cor said Block,
 thence West 12. rods North 6. rods E 12. rods
 S 6. rods to beg; - meas. Aug 15-1892 - see diagram ^{below}

Q-360. Rasmus Christoffersen, to George Pierce
 January 5-1884 -

Pt. N.E 1/4 Sec 17-T. 6. N. R. 1. W.

Beg. 2.73 ch. N. of S.W. cor of said 1/4 Sec. thence
 N. 15.60 ch. E 4.10 ch. S 12.23' W 15.58 ch.
 S 89°-45' W. 3.75 ch to beg. 6.13 a more or less.



(cent 22nd & Jackson) N.W 112.8 ft to S.E. Cor. Brick house
 S.W 76.8 " " N.E. "
 W 32.8 " S.E. cor. of "Post."